



BLACK ROCK HARBOR

Halloween Race

Sailing Instructions

October 31, 2020

Organized by Black Rock Y.C. and Fayerweather Y.C. Black Rock, Connecticut

1 Rules

- 1.1** The races will be governed by the *rules* as defined in *The Racing Rules of Sailing* (RRS) 2017-2020, and the current PHRF Regulations as adopted and amended by the YRA of LIS.
- 1.2** Crew Weight limits and the crew weight credits indicated on a boat's PHRF certificate, will not apply.
- 1.3** It is the responsibility of each boat's owner or owner's representative to maintain and have aboard proper safety equipment.

2 Check-in and Retirement

- 2.1** A boat intending to start a race shall approach the race committee signal boat with their main up and on starboard tack and hail her division and sail number before the warning signal. Boats arriving late to the starting area or boats whose class is not in the starting sequence shall stay clear of the starting area
- 2.2** A boat retiring from a race must inform the race committee as soon as possible. The race committee monitors VHF channel 68.

3 Notices to Competitors

- 3.1** Notices to competitors and scratch sheets will be posted on [Yachtscoring.com](https://www.yachtscoring.com) for the series.

3.2 Any change to the sailing instructions will be communicated before 10:30 on the day of the race.

4 Signals Made Ashore

4.1 Signals made from a race committee boat, either on a mooring in Black Rock Harbor, or docked at FYC, will be considered as signals made ashore

4.2 When flag AP is displayed ashore, “1 minute” is replace with “not less than 45 minutes” in the race signal AP.

5 Schedules

5.1 The first warning signal is scheduled for 11:00 am.

6 Divisions

6.1 Boats shall sail within one of the divisions described below. Boats shall not change divisions during a series without the consent of the organizing authority.

- Div 1: Spinnaker boats
- Div 2: Non-spinnaker boats

6.2 Division flags will be the numeral pennant corresponding to the division number.

7 Courses and Signals

7.1 Courses, the marks to be used are shown on the attached page titled “Black Rock Harbor Racecourse Marks” Further footnoted with v11 on the bottom of the page. The course to be sailed will be signaled by posting the letters that correspond to the marks that are to be rounded. They will be posted on the course board in the order in which they are to be rounded and shall include the finish mark. All rounding marks are to be left to the same side as the starting mark. Letters that correspond to rounding marks that are to be left to the opposite side shall be circled on the course board. A number following the list of marks to be rounded may be used to indicate the number of times around the course.

7.2 Divisions 1 will sail windward leeward courses and Divisions 2 will sail random leg courses.

7.4 Aids to navigation not used as turning marks may be disregarded with the following exceptions. No yacht shall pass:

- between 100ft west of LC and Penfield Light
- between Penfield Light and Lantern point
- between Flasher 2A and Fayerweather Light

8 The Start

8.1 The Starting Line will be between a flag on the race committee boat and the starting mark.

8.2 Races will be started using rule 26, with no changes:

Signal	Flag	Sound	Min
Warning	Class flag displayed	1 sound	5
Preparatory	P, I, Z, Z with I, or black	1 sound	4
One-Minute	Preparatory flag removed	1 long sound	1
Starting	Class flag removed	1 sound	0

8.3 A series of short sound signals or hails may be made before the starting sequence begins in order to attract attention. Neither failure to make this signal nor failure of a boat to hear it will be grounds for redress.

8.4 Starts will normally be rolling. At the start signal the Division Pennant will be removed and replaced by the next division's Pennant, which will be their warning signal.

8.5 Divisions will start as follows:

- Division 1 will start first, followed by Division 2

8.6 Individual Recalls will be signaled by displaying the code flag "X" and one sound. An "over early" boat will be hailed to restart by her name or sail number and an attempt may be made to notify her over VHF Channel 68. Neither failure to hail nor failure of a boat to hear their hail will be grounds for redress.

8.7 General Recalls will be signaled with code flag "First Substitute" (FS) and two sounds. A new warning signal for the recalled division will be made one minute after lowering "FS" and one sound. Succeeding divisions shall follow the order of the new start.

9 Change of Course after the Start

9.1 A change of course will be signaled by a race committee boat making sound signals, displaying flag “C”, and displaying the remaining marks to be passed, including the finishing mark. This changes rule 33.

10 The Finish

10.1 The Finish Line will be in front of the FYC Launch house. The finish will be between a mark on the opposite side of the channel opposite of the FYC Launch house and a flag on the FYC Launch House.

10.2 The Time limit for all boats will be 35 minutes after the first boat finishing within their fleet. All boats not finishing by the time limit will be scored TLE.

11 Starting Area

11.1 The starting area is around Red 2A or within 0.5NM East/South East of Red 2A.

12 Penalty System

12.1 A boat breaking a rule described in RRS Part 2 ("When Boats Meet") may take a penalty by promptly making one turn including one tack and one gybe. This modifies the “two turns rule”.

13 Scoring

13.1 The Low-Point Scoring System in RRS Appendix A will apply. If there are more than one race there will not be any “drops”. At least one race must be completed to constitute the Series.

13.2 A modified YRA of LIS, PHRF “time on time” scoring procedure will be used.
[TCF=650/ (550+PHRF)]

14 Protests

14.1 In addition to the requirements of rule 61, the protestor must also inform the race committee as soon as possible after finishing or retiring of the intent to protest. The completed US Sailing protest form must be delivered to the Race Committee within 1 hour after the race committee signal boat docks. The protest committee shall extend the time limit if there is good reason to do so.

14.2 The Organizing authority shall select a three member Protest Committee as soon as possible. One member shall be appointed Protest Committee Chairman. The three member Protest Committee must not be comprised of any interested party. Club members who are US Sailing Certified Race Officers and/or US Sailing Certified Judges may also be selected to serve on the three member Protest Committee and shall be given preference in selection. The Protest Committee Chairman will schedule the date to hear the protest.

15 Liability

15.1 Competitors participate in the racing at their own risk. See RRS rule 4, Decision to Race. The organizing authority will not accept any liability for material damage or personal injury or death sustained in conjunction with or prior to, during, or after the racing.

16 Radio Communication

16.1 The race committee will monitor and utilize VHF Channel 68 once “on station.”

16.2 The race committee may designate an unofficial observer to transmit courtesy broadcasts such as course changes, postponements or abandon races, for the safety of boats out of hailing distance or sight of the R/C boat. (It is the responsibility of each competitor to observe the race committee’s visual signals, failure to hear courtesy broadcasts and errors or omissions on the part of the designated observer will not be considered as grounds for granting redress).

17 Trophies

17.1 Top finishers in each Division will be awarded a memorable reward.

17.2 All will be rated as per their PHRF according to YRA of LIS. If a boat does not have a YRALIS PHRF certificate, the Race committee will use the closest available PHRF from the YRALIS database.

18 Contacts

BRYC: Jenny Anderson (203) 803-5618 jennyandsea@gmail.com

FYC: Michael Mears (203) 522-9371 Sailing@FYCCT.org

FYC: Michael Cooleen michael.cooleen@gmail.com



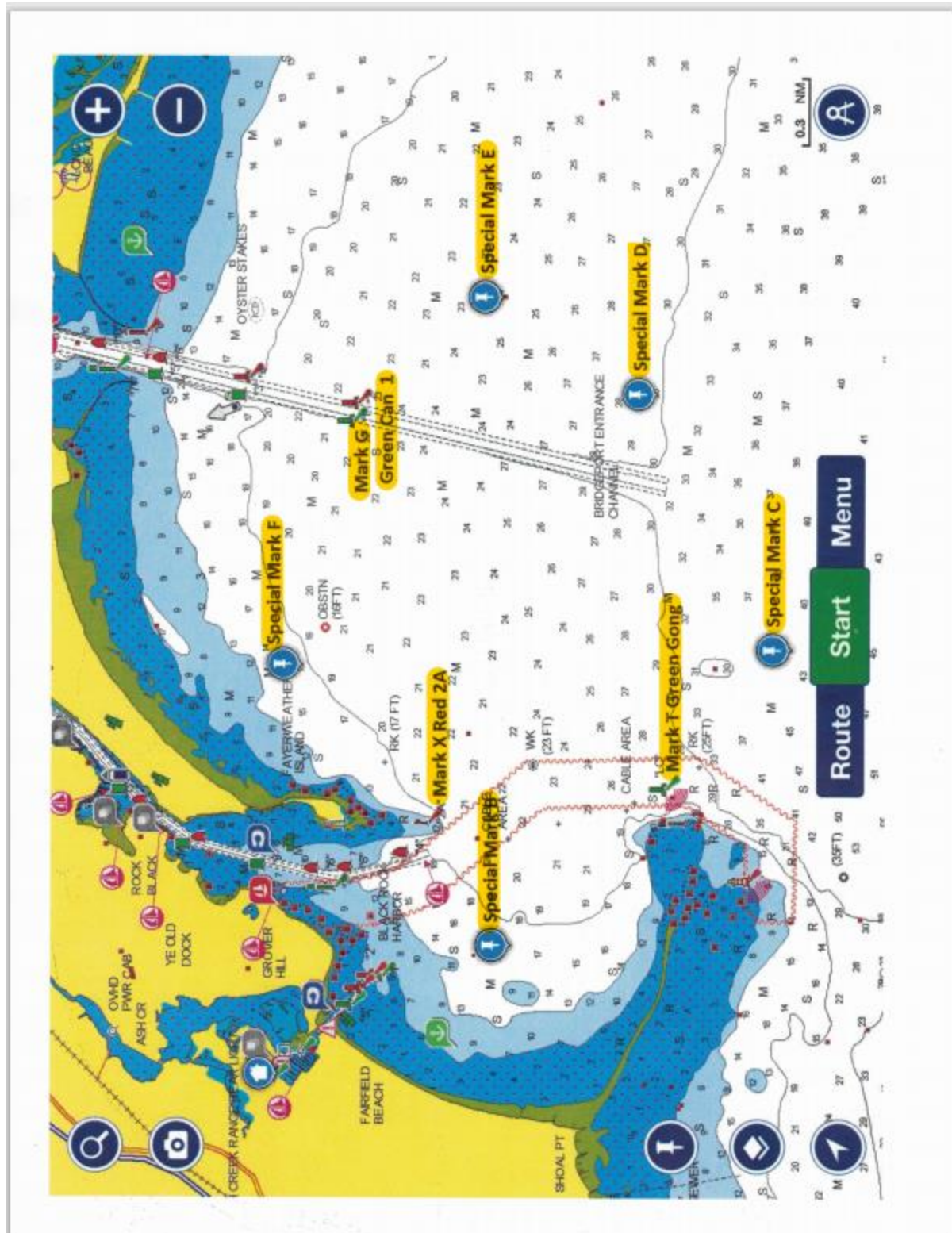
BLACK ROCK HARBOR

Race Course Marks

Organized by Black Rock Y.C. and Fayerweather Y.C. Black Rock, Connecticut

- A – Special Starting Mark – either Yellow or Orange tetrahedron**
- B – Special Mark “B” (GPS 41° 07.844/ 73° 13.824)**
- C – Special Mark “C” (GPS 41° 06.837/ 73° 12.178)**
- D – Special Mark “D” (GPS 41° 07.348/ 73° 10.904)**
- E – Special Mark “E” (GPS 41° 07.926/ 73° 10.426)**
- F – Special Mark “F” (GPS 41° 08.679/ 73° 12.248)**
- G – Green Can “1” Bridgeport Entrance Channel**
- J - Special mark windward (yellow tetrahedron)**
- K - Special mark leeward (yellow tetrahedron)**
- R – Red Bell “18” 2 nautical miles South of Point no Point – Stratford**
- S – Red Bell “22” 3/4 nautical mile South of S. Pine Creek Point – Southport**
- T – Green Gong “LC” off Penfield Reef**
- W – Green Can “1” at Stony Brook**
- X – Red “2A” Black Rock Harbor Entrance Channel**
- Y – Green Gong “11A” 1.5 nm NNW Port Jefferson Entrance**
- Z – RW “PJ” 1.5 nm N Port Jefferson Entrance**

NOTE: MARKS B,C,D,E & F are estimated GPS coordinates, final coordinates will be updated when the Marks are placed in the water.



Mark Distance Table

(Estimate Nautical Miles between Marks)

	B	C	D	E	F	G	T	X
B		1.5	2	2.4	1.2	2.2	0.5	0.5
C	1.5		0.8	1.7	2	2.3	0.9	1.6
D	2	0.8		0.9	1.9	1.8	1.5	2
E	2.4	1.7	0.9		1.8	1.1	2.1	2.1
F	1.2	2	1.9	1.8		1.2	1.3	0.7
G	2.2	2.3	1.8	1.1	1.2		2.1	1.7
T	0.5	0.9	1.5	2.1	1.3	2.1		0.9
X	0.5	1.6	2	2.1	0.7	1.7	0.9	

Mark Bearings

(Estimate using RC position at 41°08.315' / 73°12.417')

	*Bearing to First Mark
B	240
C	175
D	140
E	115
F	0
G	55
T	210
X	265



Black Rock Harbor Wednesday Night 2020 Race Course Sheet



PORT	indicates leave mark to PORT
STARBD	indicates leave mark to STARBOARD
A	Start
F	Finish

Course # Start Turning Marks Finish *Bearing to
First Mark

Spinnaker

1	A	T	A	T		F	210
2	A	T	F	T	F	F	210
3	A	C	A	C		F	175
4	A	C	F	C	F	F	175
5	A	D	A	D		F	140
6	A	D	F	D	F	F	140
7	A	E	A	E		F	115
8	A	E	B	E	B	F	115
9	A	F	C	F	C	F	0
10	A	F	D	F	D	F	0
11	A	E	F	E	F	F	115
12	A	B	A	B		F	240
13	A	B	D	B	D	F	240
14	A	B	E	B	E	F	240
15	A	G	A	G		F	55
16	A	G	C	G	C	F	75



Black Rock Harbor Wednesday Night 2020 Race Course Sheet



PORT	indicates leave mark to PORT
STARBD	indicates leave mark to STARBOARD
A	Start
F	Finish

Course #	Start	Turning Marks	Finish	Bearing to First Mark
----------	-------	---------------	--------	-----------------------

Non - Spinnaker

1	A	T	D	E	F	210
2	A	T	D	G	F	210
3	A	T	D	F	F	210
4	A	T	C	E	F	210
5	A	T	C	F	F	210
6	A	T	F	E	F	210
7	A	C	D	F	F	175
8	A	C	E	F	F	175
9	A	C	E		F	175
10	A	C	G		F	175
11	A	F	E		F	0
12	A	F	E	C	F	0
13	A	T	E	F	F	210
14	A	G	E		F	55
15	A	G	B		F	55
16	A	G	D		F	55
17	A	G	D	T	F	55
18	A	G	E	C	F	55
19	A	G	F	C	F	55
20	A	G	T	D	F	55
21	A	G	B	D	F	55
22	A	B	D	H	F	240
23	A	B	F		F	240
24	A	B	F	E	F	240
25	A	B	F	D	F	240
26	A	D	E	B	F	140
27	A	D	E	F	F	140
28	A	D	B	E	F	140
29	A	D	T	F	F	140
30	A	T	C	D	F	210
31	A	E	C		F	115